

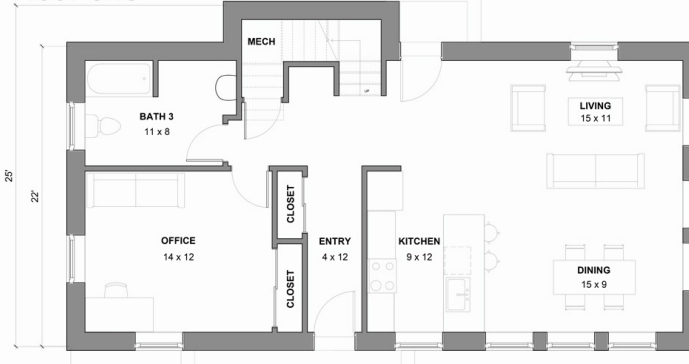


# EAST BRANCH HOMES

Net zero ready ■ Triple glazed windows ■ Mini split heating and cooling system

High performance ventilation system with fresh air supplied to each bedroom

Floor One



## Gray Barn Details:

1,760 Square feet

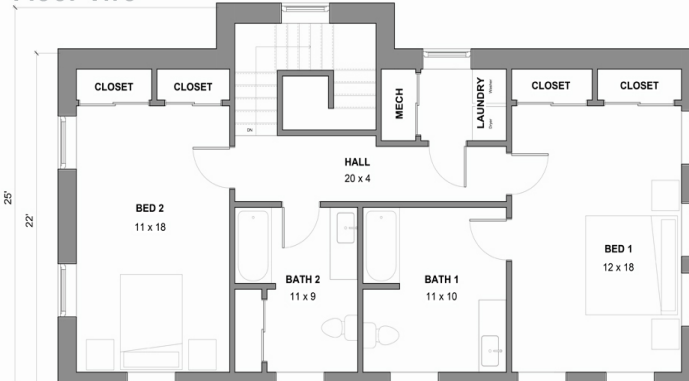
2 Bedrooms – one primary suite with dedicated bath

Office/library – can be converted to a bedroom for first floor living

3 Baths

Open plan living area with kitchen, dining and living room

Floor Two



For more information:

413-296-0123 ■ PO Box 57, West Chesterfield, MA 01084

info@eastbranchhomes.com ■ www.eastbranchhomes.com