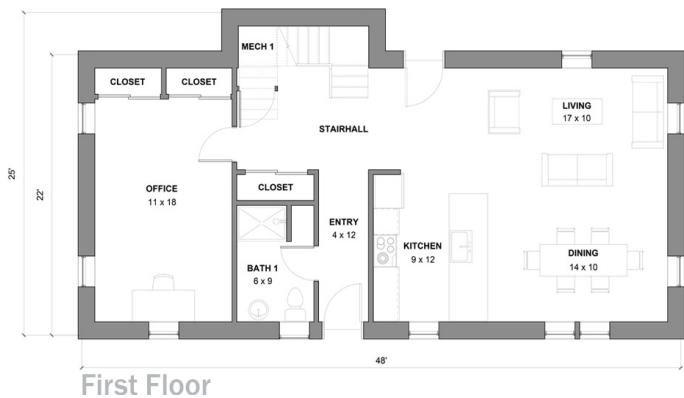




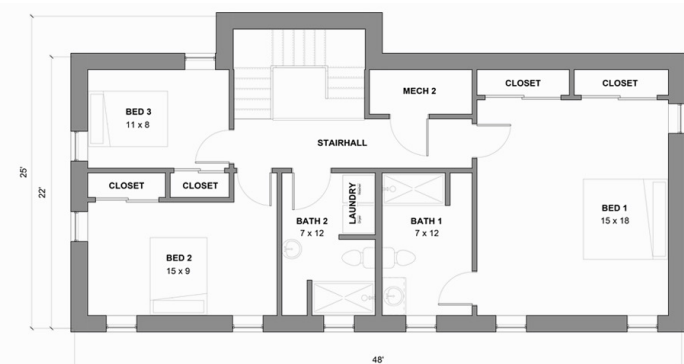
EAST BRANCH HOMES

Net zero ready ■ Triple glazed windows ■ Mini split heating and cooling system

High performance ventilation system with fresh air supplied to each bedroom



First Floor



Second Floor

Farmhouse Details:

1,936 - 2,180 Square feet

3 Bedrooms – one primary suite with dedicated bath

Office/library – can be converted to a bedroom for first floor living

3 Baths

Open plan living area with kitchen, dining and living room

For more information:

413-296-0123 . PO Box 57, West Chesterfield, MA 01084

info@eastbranchhomes.com . www.eastbranchhomes.com